

## Giving Tree Registration Form

### YOUR PAYMENT

Total leaf order \$ \_\_\_\_\_

Please find enclosed my cash or cheque  
(made payable to The Bays Healthcare Group)

Or please charge my:

VISA  Mastercard  AMEX

Card number

Expiry

Signature

Cardholder name

Your order is a tax deductible donation.

Please keep me up to date with news about  
maternity and fundraising events.

Return this completed registration form to  
The Bays Fundraising Department (details right).



## Our Special Care Nursery

When you purchase a leaf on our Giving Tree, the proceeds go towards The Bays Maternity Unit incorporating our Special Care Nursery.

Each year our Special Care Nursery provides the utmost specialist care for more than 140 unwell, premature or babies needing additional monitoring.

It is a state-of-the-art medical facility providing the very best care for our littlest patients.

The Special Care Nursery is also a place where parents can receive incredible support, warmth and care from medical staff who can assist them through what can be an extremely stressful and emotional time.

Your contribution helps ensure that we can provide the very best care. It's a great way to show your appreciation and extend the love to other members of The Bays' family.

## Thank you

Please allow seven business days for us to process your order. A tax deductible receipt will be sent to you by mail/email.

Please let us know if you are celebrating generations of family members born at either The Bays Hospital, Mornington Bush Hospital or Hastings and District Bush Nursing Hospital, so that we can honour your incredible family legacy.

### For more information

#### The Bays Healthcare Group Inc

Vale Street | PO Box 483  
Mornington VIC 3931

#### Fundraising Department

Direct 03 5970 5339  
Hospital 03 5975 2009  
Email fundraising@thebays.com.au

[www.thebays.com.au](http://www.thebays.com.au)

[www.facebook.com/TheBaysHealthcareGroup](https://www.facebook.com/TheBaysHealthcareGroup)

THE  BAYS



## Celebrate the birth of your baby

Purchase a leaf on our  
Giving Tree

### The Bays Healthcare Group

Caring for the Peninsula

VALE STREET, MORNINGTON VIC 3931

## Welcome to The Bays family

Having a baby is a beautiful and extraordinary event for everyone involved. We are very proud to have been a part of it with you.

Your child is now one of generations of babies born at The Bays. We think it's a significant event that's worth celebrating and honoring.

You can celebrate the birth of your new baby by purchasing a leaf on our beautiful Giving Tree art installation located in the main reception of The Bays Hospital.

Mornington parents Katie and Rob have had three children born at The Bays, Maya in 2009, Alex in 2012 and Samara in 2015.

*“The Giving Tree is a beautiful way to commemorate the wonderful experience of welcoming our children into the world, whilst also giving something back to the hospital. I cannot speak highly enough of the maternity team – they feel like extended family. We were so appreciative of the kindness, respect, support and professionalism we received throughout this special time.”*



## Commemorate the birth of your baby

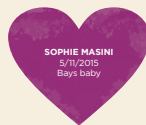
The Giving Tree represents generations of babies born at The Bays. It celebrates our history as a bush nursing hospital and our evolution into one of the finest maternity units in the country.

For a tax-deductible donation of \$150 you can order a leaf with your baby's name and date of birth recorded on it.

Your individual leaf plaque will be placed on the wall and form part of The Bays' Giving Tree. Families with twins or two children can purchase a double leaf. Triple leaves are available for three child names.

Families who have celebrated multiple births with us may purchase a branch of the tree to accommodate all their names.

Our Giving Tree is a wonderful way to commemorate your baby's birth, and by doing so, you can help future generations. All funds raised through the Giving Tree program will be used to purchase much needed equipment for The Bays Hospital Maternity Unit. Equipment needs include foetal monitors, neonatal humidicribs, phototherapy lights, breast pumps and cots.



Single



Double



Triple

## Giving Tree Registration Form

Title

First name

Surname

Address

Suburb  Postcode

Phone

Email

How would you prefer we communicate with you:

Email  Post

### LEAF DESIGN OPTIONS

- Single (for one name only) ..... \$150.00
- Double (for twins or two children) ..... \$300.00
- Triple (for three children) ..... \$450.00

Colours:

Purple  Silver  Pink  Gold

### YOUR LEAF ORDER

If ordering more than one leaf include additional details on a separate sheet.

Single leaf  Double leaf  Triple leaf

Leaf colour

Baby's first name

Baby's surname

DOB

Relationship

Please tick the following:

- Bays baby (1997–present)  
 Bush baby (1930–1997)

Continued...